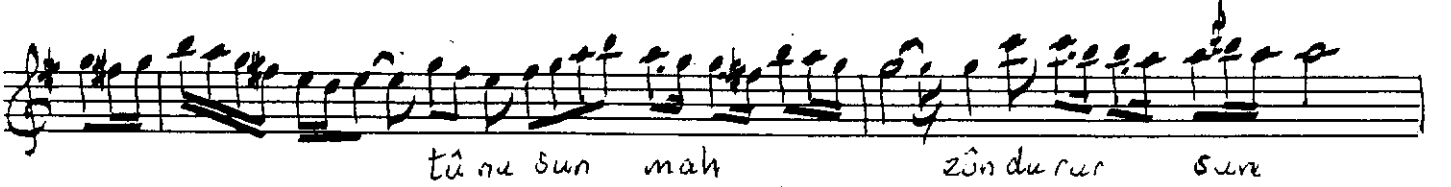
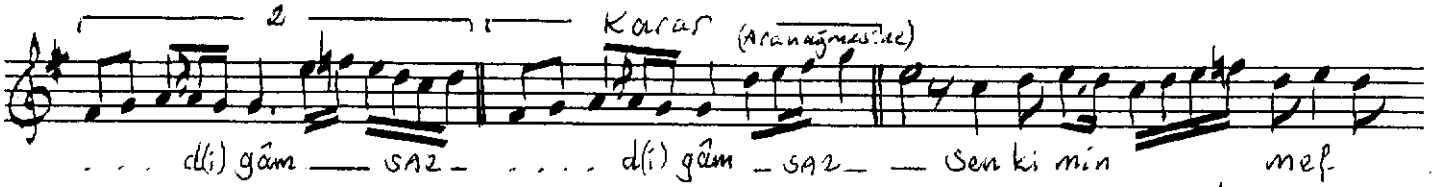


# MÂHÜR ŞARKI

Usul: Ağıraksak

Tanbûrî Cemil Bay



Var iken zatında böyle hüs nû ân olma ni hân  
Seyre çık ref tār edip uşşâki eyle şâd-gām  
Sen ki min mef tû nu sun mah zûn du rar sure  
Seyre çık ref tār edip uşşâki eyle şâd-gām

Muhtelif notalardan ... 12.4.2003

Ömer Kozel